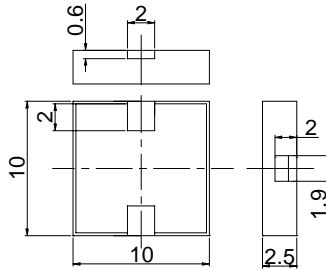
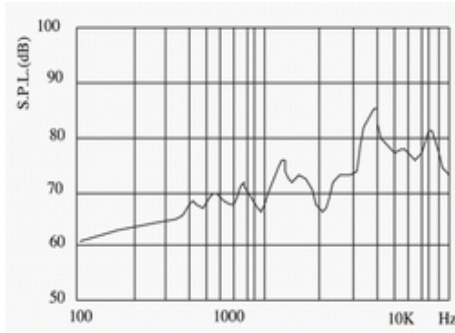


# Piezoelectric Sound Components



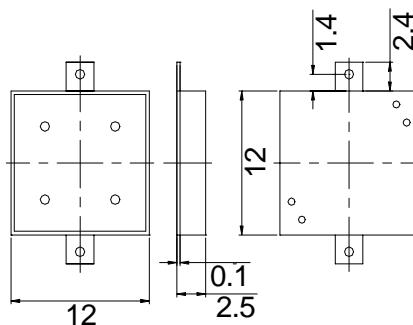
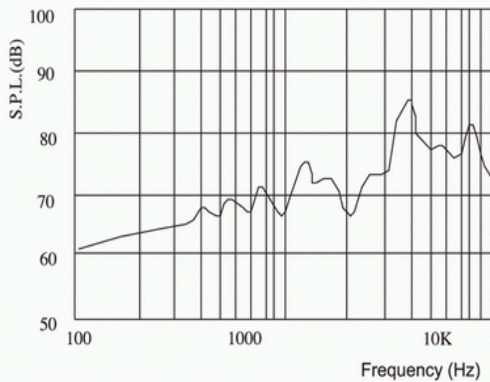
## BSP1010-05H03

Rated Voltage (square wave)	5Vp-p
Operating Voltage	1...25Vp-p
a) Rated Current	Max.2.5mA
Capacitance at 120Hz	10nF ±30%
a) Sound Output at 10cm	Min.70dB
Resonant Frequency	5200Hz
Operating Temperature	-40...+85°C
a) Value applying at rated voltage(5200Hz,1/2duty square wave)	



## BSP1212-05H2.5

Rated Voltage (square wave)	5Vp-p
Operating Voltage	1...25Vp-p
a) Rated Current	Max.3mA
Capacitance at 120Hz	13nF ±30%
a) Sound Output at 10cm	Min.78dB
Resonant Frequency	4100Hz
Operating Temperature	-40...+85°C
a) Value applying at rated voltage(4100Hz,1/2duty square wave)	

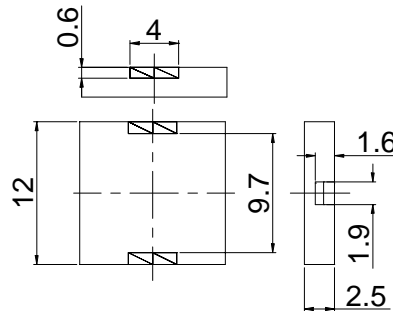
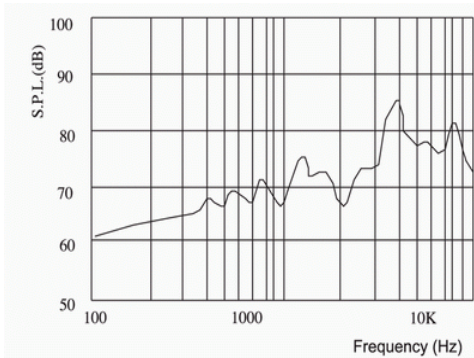


# Piezoelectric Sound Components



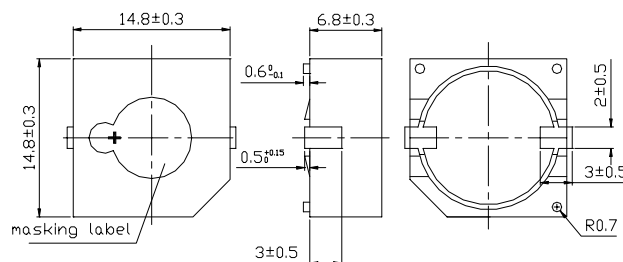
## BSP1212-03H2.5B

Rated Voltage (square wave)	3Vp-p
Operating Voltage	1...25Vp-p
a) Rated Current	Max.3mA
Capacitance at 120Hz	15nF ±30%
a) Sound Output at 10cm	Min.70dB
Resonant Frequency	4000Hz
Operating Temperature	-40...+85°C
a) Value applying at rated voltage(4000Hz, 1/2duty square wave)	



## BSP1414-12H6.8

Rated Voltage (square wave)	12Vp-p
Operating Voltage	1...20Vp-p
a) Rated Current	Max.3mA
Capacitance at 120Hz	15nF ±30%
a) Sound Output at 10cm	Min.85dB
Resonant Frequency	5000Hz
Operating Temperature	-40...+80°C
a) Value applying at rated voltage(5000Hz, 1/2duty square wave)	

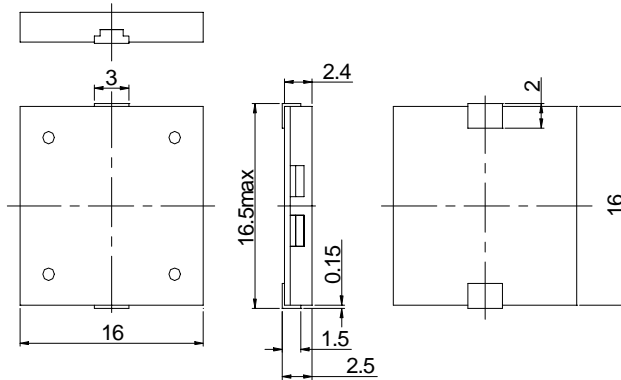
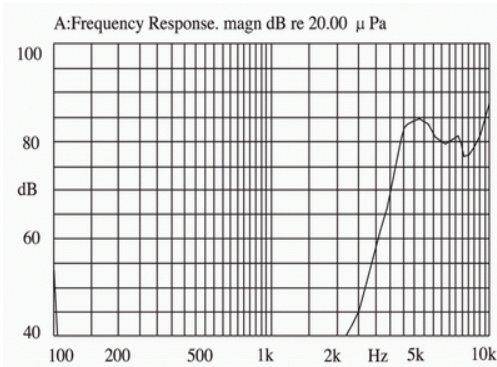


# Piezoelectric Sound Components



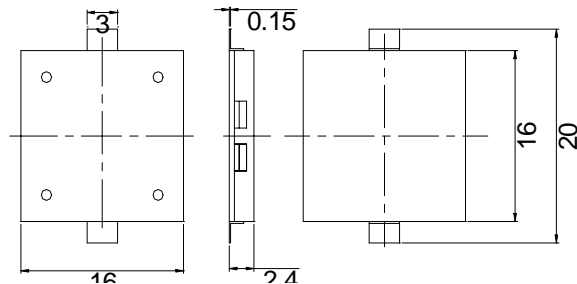
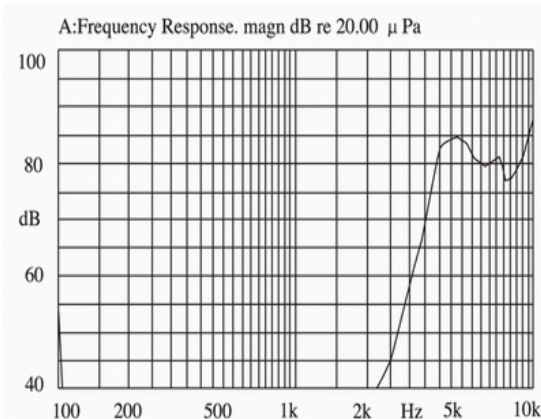
## BSP1616-03H2.5-01

Rated Voltage (square wave)	3Vp-p
Operating Voltage	1...25Vp-p
a) Rated Current	Max.5mA
Capacitance at 120Hz	16nF ± 30%
a) Sound Output at 10cm	Min.72dB
Resonant Frequency	4000Hz
Operating Temperature	-40...+85°C
a) Value applying at rated voltage(4000Hz,1/2duty square wave)	



## BSP1616-03H2.5

Rated Voltage (square wave)	3Vp-p
Operating Voltage	1...25Vp-p
a) Rated Current	Max.5mA
Capacitance at 120Hz	16nF ± 30%
a) Sound Output at 10cm	Min.72dB
Resonant Frequency	4000Hz
Operating Temperature	-40...+85°C
a) Value applying at rated voltage(4000Hz,1/2duty square wave)	

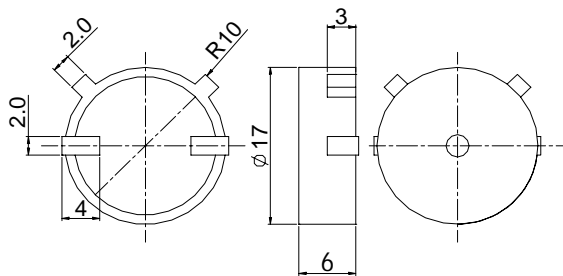
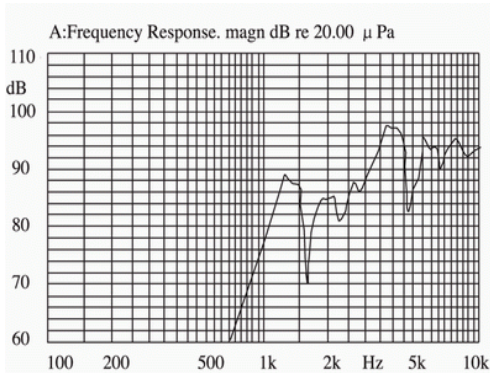


# Piezoelectric Sound Components



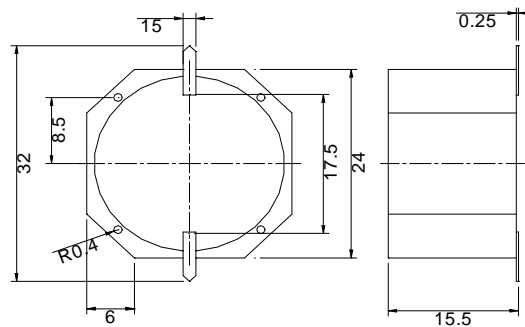
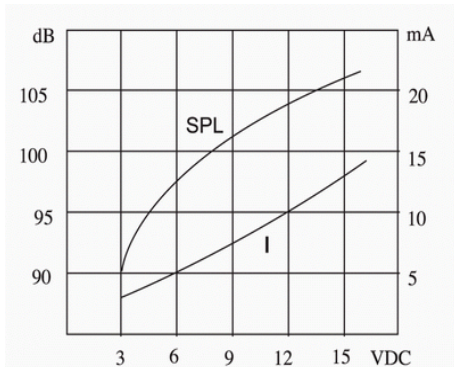
## BSP1705H06M

Rated Voltage (square wave)	3Vp-p
Max. Operating Voltage	15Vp-p
a) Rated Current	Max.1.5mA
Capacitance at 120Hz	16nF ± 30%
a) Sound Output at 10cm	Min.80dB
Resonant Frequency	4000Hz
Operating Temperature	-40...+85°C
a) Value applying at rated voltage(4000Hz, 1/2duty square wave)	



## BSP2424-12XH15.5

Rated Voltage (square wave)	12VDC
Operating Voltage	3...15VDC
a) Rated Current	Max.15mA
a) Sound Output at 10cm	Min.98dB
a) Resonant Frequency	3000 ± 450Hz
Operating Temperature	-40...+85°C
Weight	4g
a) Value applying at rated voltage	

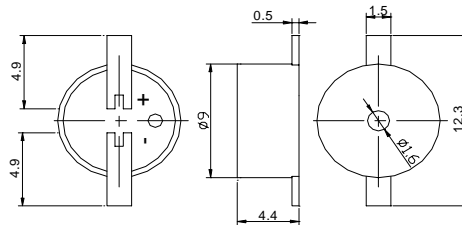
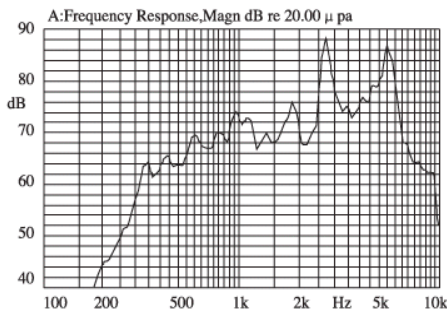


# SMD Electro-magnetic Transducer



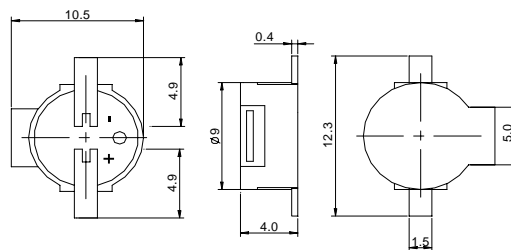
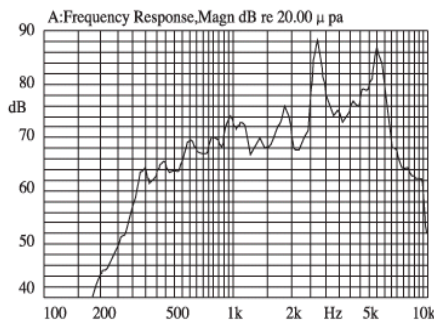
## SMT0903H4.4

Rated Voltage (square wave)	3V
Operating Voltage	2...4V
a) Rated Current	Max.80mA
Sound Output at 10cm	Min.85dB
Coil Resistance	16 Ω ±3
Resonant Frequency	2730Hz
Operating Temperature	-40...+85°C
a) Value applying at rated voltage(2730Hz,1/2duty square wave)	



## SMT0903H04BS

Rated Voltage (square wave)	3V
Operating Voltage	2...4V
a) Rated Current	Max.80mA
Sound Output at 10cm	Min.85dB
Coil Resistance	16 Ω ±3
Resonant Frequency	2730Hz
Operating Temperature	-40...+85°C
a) Value applying at rated voltage(2730Hz,1/2duty square wave)	



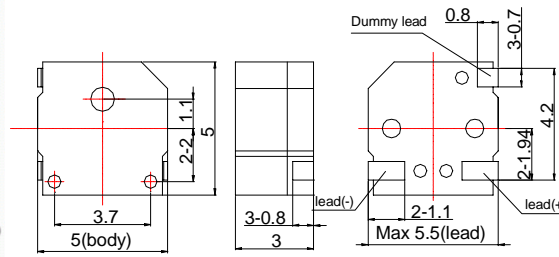
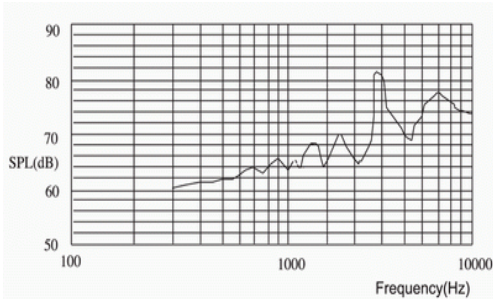


# SMD Electro-magnetic Transducer



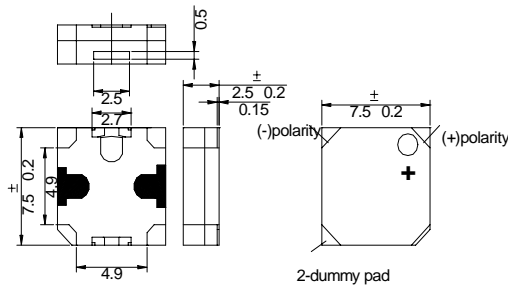
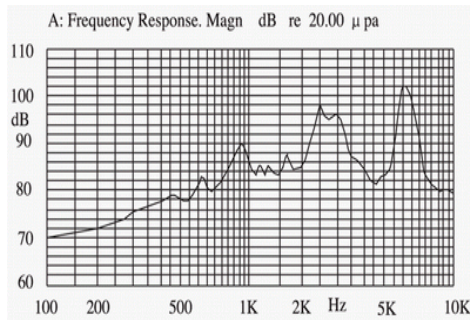
## SMT5050-03H03

Rated Voltage (square wave)	3V
Max. Operating Voltage	4V
a) Rated Current	Max.100mA
Sound Output at 10cm	Min.78dB
Coil Resistance	12 Ω ±3
Resonant Frequency	4000Hz
Operating Temperature	-40...+85°C
a) Value applying at rated voltage(4000Hz,1/2duty square wave)	



## SMT7575-03H2.5

Rated Voltage (square wave)	3.6V
Operating Voltage	2.5...4.5V
a) Rated Current	Max.100mA
Sound Output at 10cm	Min.85dB
Coil Resistance	15 Ω ±3
Resonant Frequency	2700Hz
Operating Temperature	-40...+85°C
a) Value applying at rated voltage(2700Hz,1/2duty square wave)	

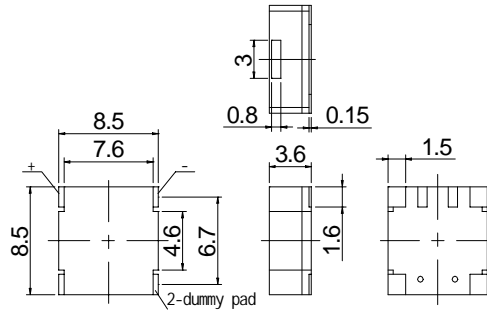
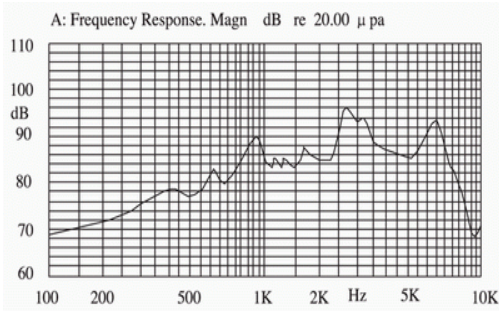


# SMD Electro-magnetic Transducer



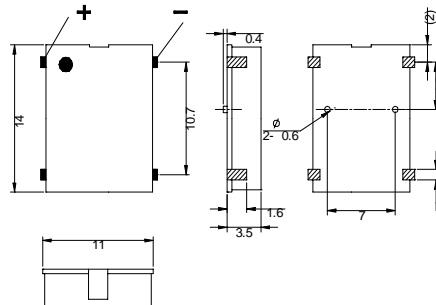
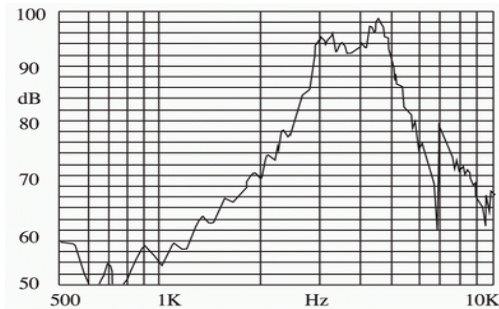
## SMT8585-03H3.6

Rated Voltage (square wave)	3V
Operating Voltage	2...5V
a) Rated Current	Max.80mA
Sound Output at 10cm	Min.85dB
Coil Resistance	18Ω ±3
Resonant Frequency	2730Hz
Operating Temperature	-40...+85°C
a) Value applying at rated voltage(2730Hz,1/2duty square wave)	



## SMT1411-03H3.5

Rated Voltage (square wave)	3V
Operating Voltage	2...4.5V
a) Rated Current	Max.70mA
Sound Output at 10cm	Min.87dB
Coil Resistance	19Ω ±3
Resonant Frequency	3200Hz
Operating Temperature	-40...+85°C
a) Value applying at rated voltage(3200Hz,1/2duty square wave)	



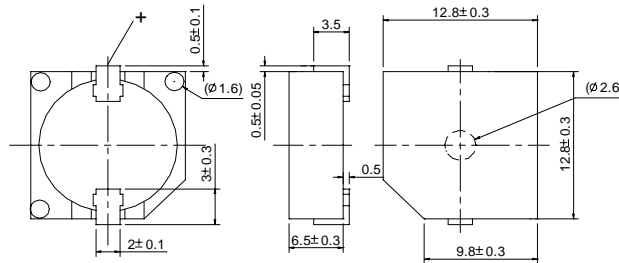
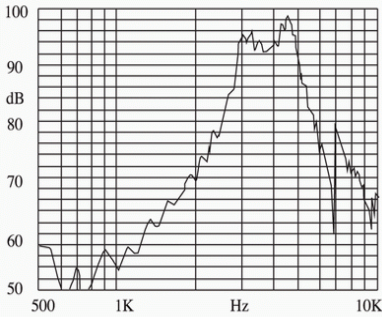
# SMD Electro-magnetic Transducer



## SMT1212-12H6.5

Rated Voltage (square wave)	12V
Operating Voltage	8...16V
a) Rated Current	Max.40mA
Sound Output at 10cm	Min.85dB
Coil Resistance	120 Ω ±21
Resonant Frequency	2400Hz
Operating Temperature	-40...+85 °C
Weight	2g

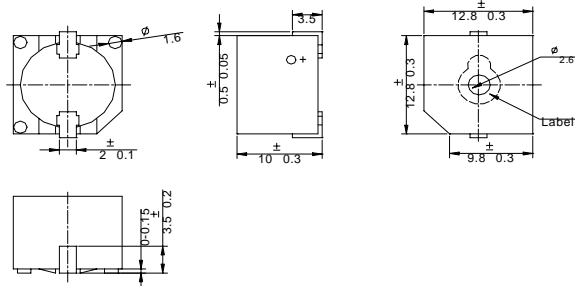
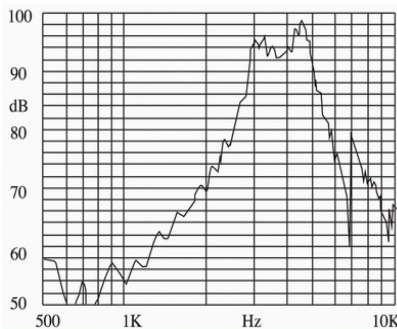
a) Value applying at rated voltage(2400Hz,1/2duty square wave)



## SMT1212-12H10

Rated Voltage (square wave)	12V
Operating Voltage	8...16V
a) Rated Current	Max.40mA
Sound Output at 10cm	Min.85dB
Coil Resistance	140 Ω ±21
Resonant Frequency	2400Hz
Operating Temperature	-40...+85 °C
Weight	2g

a) Value applying at rated voltage(2400Hz,1/2duty square wave)





# SMD Electro-magnetic Buzzer

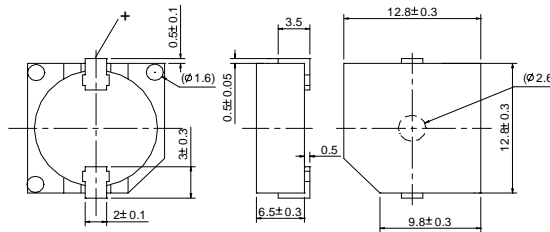
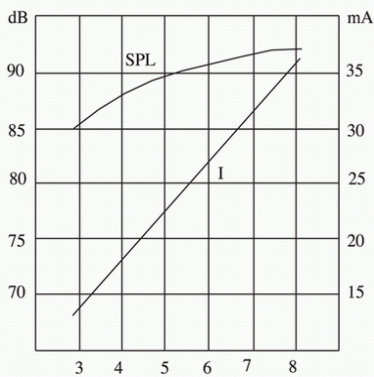


## SMT1212-05XH6.5



Rated Voltage	5VDC
Operating Voltage	8...15VDC
a) Rated Current	Max.30mA
Sound Output at 10cm	Min.85dB
Resonant Frequency	2300Hz ± 300
Operating Temperature	-40...+85°C
Weight	2g

a) Value applying at rated voltage



## SMT1212-05XH10



Rated Voltage	5VDC
Operating Voltage	8...15VDC
a) Rated Current	Max.30mA
Sound Output at 10cm	Min.85dB
Resonant Frequency	2300Hz ± 300
Operating Temperature	-40...+85°C
Weight	2g

a) Value applying at rated voltage

